

## E100-13545 B100-13546

Line-sensing and ambient sensing controllers



### Description

The E100 and B100 series are a cost effective NEMA 4X line-sensing and ambient sensing controllers, both have a watertight, dust-tight, and corrosion resistant epoxy coated aluminium die cast enclosures for ordinary environments. The line sensing E100 has a stainless steel bulb and capillary for a dependable and accurate control. The ambient sensing B100 has a liquid filled stainless steel stem that ensures an accurate control system both indoors and outdoors.

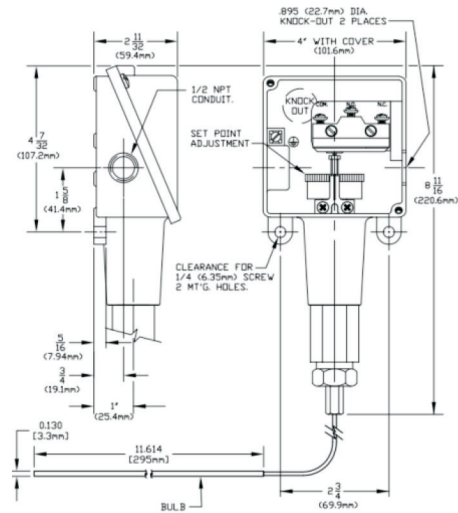
### Certifications

	Region	Agency	Classification
	North America	UL	Pressure Switch: UL E42272, V1S7 ANSI/UL 508; CSA-C22.2 No. 14 Certificate #: 20181026-E42272 Temperature Switch: UL E10667, V3S1 UL 873; CSA-C22.2 No. 24 Certificate #: 20181204-E10667
 	Europe	ATEX	II 1 G Ex ia IIC T6 Ga (OPTIONAL – code M405) -50 °C < T <sub>amb</sub> < +60 °C Certificate #: Demko 11 ATEX 1105261X Pressure Equipment Directive (PED) (2014/68/EU) Compliant to PED UL 508, UL 61010 Products rated lower than 7.5 psi are outside the scope of the PED Low Voltage Directive (LVD) (2014/35/EU) UEC compliant to LVD EN 61058-1, EN 61010-1 Products rated lower than 50 VAC and 75 VDC are outside of the scope of the LVD The Low Voltage Directive does not apply to products for use in hazardous locations
 	International	IECEX	Ex ia IIC T6 Ga (OPTIONAL – code M405) T <sub>amb</sub> = -50 °C to +60 °C Certificate #: IECEX UL 14.0075X

## E100-13545 Specifications

**Enclosure:** NEMA 4X, Die cast aluminium, epoxy powder coated, gasketed, stainless steel with captive cover screws.

- Connection: 1/2" NPT (female)
- Switch: Single pole, double Throw (SPDT)
- Adj. Set Point Range: 25°F to 325°F (-4°C to 163°C)
- Max. Temperature: 360°F (182°C)
- Ambient Range of enclosure: -40°F to 160°F (-40°C to 71°C)
- Rating: 22A up to 480VAC
- Sensor: 10' (3m) SS capillary, .312 / 8in ( 8mm / 20cm) bulb



## B100-13546 Specifications

**Enclosure:** NEMA 4X, Die cast aluminium, epoxy powder coated, gasketed, stainless steel with captive cover screws.

- Connection: 1/2" NPT (female)
- Switch: Single pole, double Throw (SPDT)
- Adj. Set Point Range: 15°F to 140°F (-9°C to 60°C)
- Max. Temperature: 160°F (71°C)
- Ambient Range of enclosure: -40°F to 160°F (-40°C to 71°C)
- Rating: 22A up to 480VAC
- Sensor: Stainless Steel Stem

