

### PBM-200-A

High profile multiple entry point power connection kit for PSB/MSB/HSB cable with stand and junction box on pipe with 8 AWG Terminals for ordinary and hazardous environments.

#### Technical Data

<b>Ambient temperature range</b>	-40°F to 131°F / -40°C to 55°C
<b>Min. installation temperature</b>	-40°F / -40°C
<b>Max. pipe temperature</b>	464°F / 240°C
<b>Max. operating temperature end seal</b>	PSB: 185°F / 85°C MSB: 392°F / 200°C HSB: 374°F / 190°C
<b>Power supply</b>	Max. 277 Vac
<b>Protection classification</b>	Class I, Div 2 Group A, B, C, D Class II, Div 2 Group E, F, G Class III
<b>Ingress protection</b>	NEMA Type 4X / IP65
<b>Conduit entry size</b>	PBS-200-A: 3/4" PBS-200-A10: 1"
<b>Max. power conductor size</b>	PBS-200-A: 10 AWG (6 mm <sup>2</sup> ) PBS-200-A10: 6 AWG (10 mm <sup>2</sup> )
<b>Terminals</b>	Spring clamp Ex e; 4x2 lines, 3x2 PE

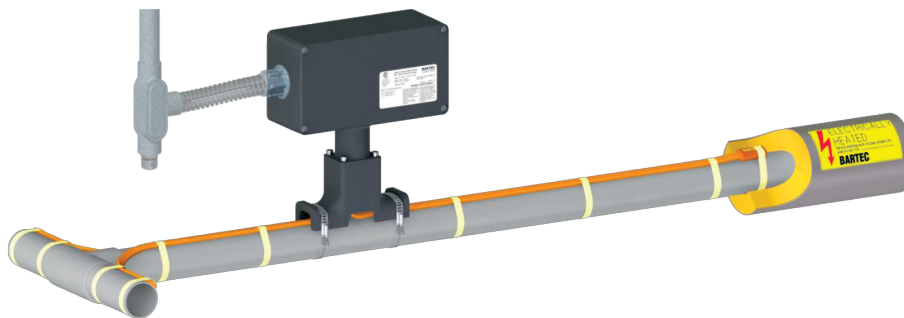


#### Certifications / Approvals



PBM-200-A | PBM-200-A10 Power entry kit for BARTEC PSB, MSB and HSB trace heaters

#### PBM-200-A | PBM-200-A10 Power entry kit<sup>1</sup>



<sup>1</sup> Note that the illustrations might vary depending on whether you use the PBM-200-A or the PBM-200-A10 kit.

## BARTEC

### Kit Contents

The following table lists the kit contents of the PBM-200-A and PBM-200-A10 Power entry kit<sup>2</sup>:



1 x Silicone pants



1 x End seal



1 x Green/yellow tube for grounding braid



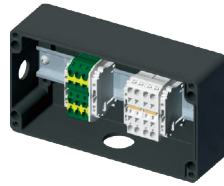
1 x Silicone adhesive



3 x Trace heater grommet



1 x Cover for junction box  
incl. 4 fixing screws



1 x Junction box with connection terminals  
"-A" junction boxes:  
220 x 120 x 90 mm  
"-A10" junction boxes:  
260 x 160 x 90 mm



1 x Top unit of the mounting stand  
incl. sealing ring and lock nut



1 x Base unit of the mounting stand

<sup>2</sup> Note that the illustrations might vary depending on whether you use the PBM-200-A or the PBM-200-A10 kit.